

DIESEL SCISSOR LIFT

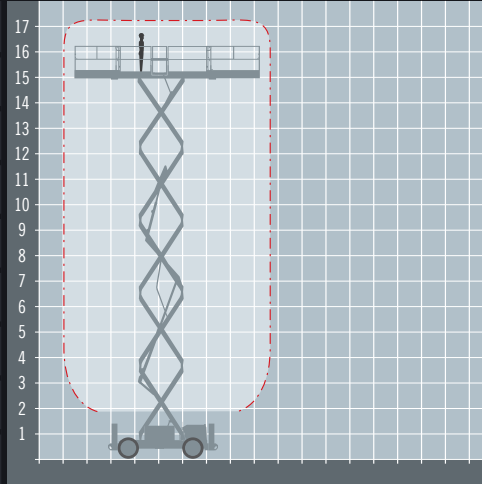
SKYJACK SJ9250

ALTERNATIVES: Genie GS5390









Rough terrain diesel scissor lift

REACH HEIGHT	17.24 m
PLATFORM HEIGHT	15.24 m
STOWED HEIGHT*	2.29 m
LENGTH	4.47 m
WIDTH	2.34 m
PLATFORM SIZE	4 x 1.88 m
EXTENDED SIZE	7.21 x 1.88 m
WEIGHT	7,407 kg
LIFT CAPACITY	681 kg



*Stowed height shown is with the handrails folded.

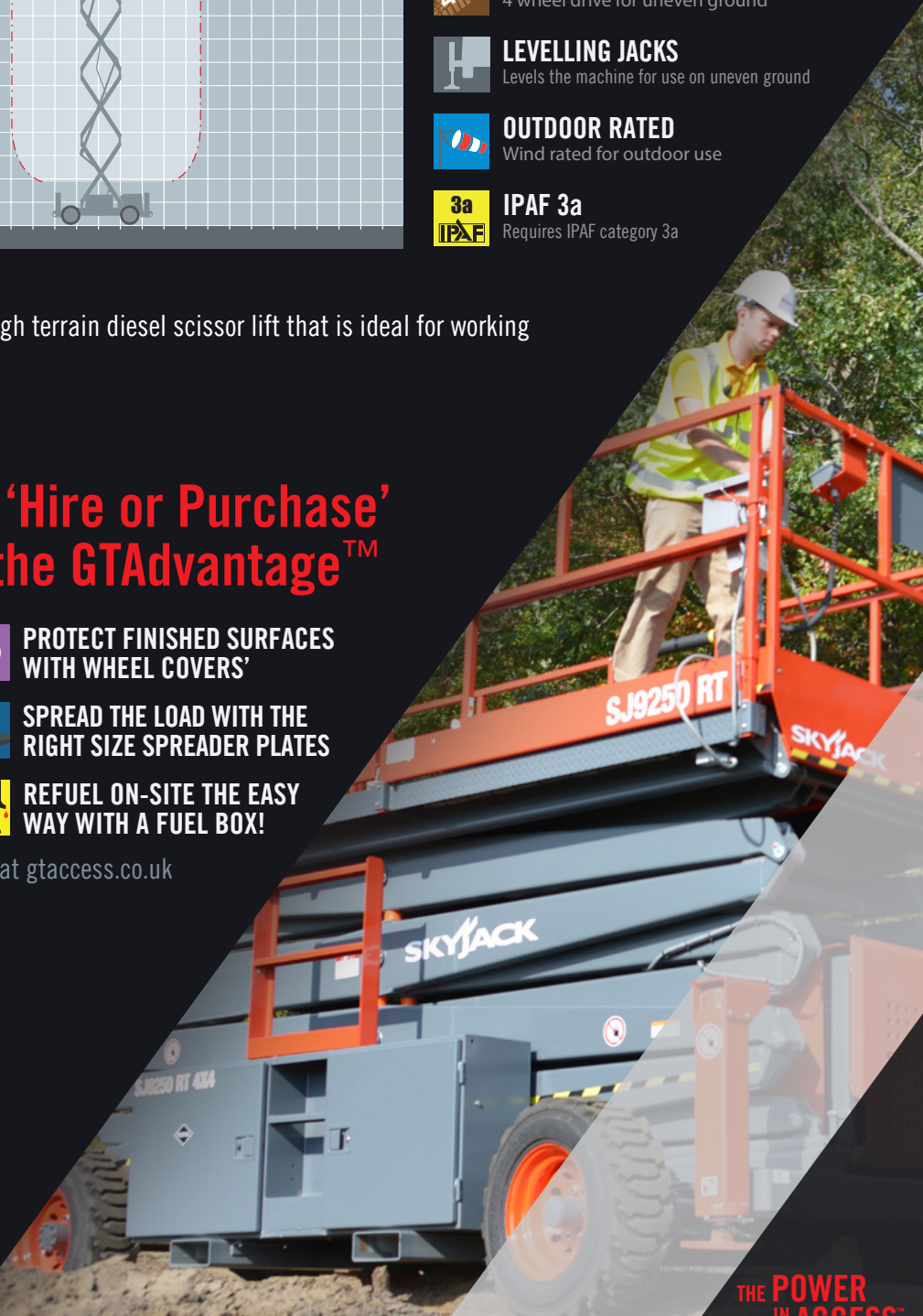
-  **DIESEL POWERED**
Perfect for external applications
-  **DOUBLE DECK**
Dual roll out extension decks for added room
-  **ROUGH TERRAIN**
4 wheel drive for uneven ground
-  **LEVELLING JACKS**
Levels the machine for use on uneven ground
-  **OUTDOOR RATED**
Wind rated for outdoor use
-  **IPAF 3a**
Requires IPAF category 3a

The Skyjack SJ9250 RT is a medium sized rough terrain diesel scissor lift that is ideal for working safely at height outdoors on rough terrain.

A range of extra's for 'Hire or Purchase' designed to give you the GTAdvantage™

-  **STOP NUISANCE BORROWING WITH GTA SECURE™**
-  **PROTECT FINISHED SURFACES WITH WHEEL COVERS'**
-  **GAIN ANOTHER PAIR OF HANDS WITH PLATFORM ACCESSORIES**
-  **SPREAD THE LOAD WITH THE RIGHT SIZE SPREADER PLATES**
-  **PROTECT SENSITIVE GROUND WITH 'GROUND GUARDS'**
-  **FUEL BOX REFUEL ON-SITE THE EASY WAY WITH A FUEL BOX!**

Find out more about the 'GTAdvantage' extras at gtaccess.co.uk



THE POWER IN ACCESS™

HIRE | TRAINING | SALES | SERVICE 0 3 3 0 3 3 3 4 8 4 8